

# SPF UK Climate Resilience Programme

Webinar Series 2021



UK Research  
and Innovation



Website: <https://www.ukclimateresilience.org/>

# Timings



<b>13:00</b>	<b>UK Climate Resilience Programme news</b>	<b>Professor Suraje Dessai, UK Climate Resilience Champion</b>
<b>13.05</b>	<b>Introduction to the FUTURE-DRAINAGE project</b>	<b>Professor Hayley Fowler, Newcastle University</b>
<b>13.10</b>	<b>Climate projections through to climate uplifts</b>	<b>Prof Elizabeth Kendon, Met Office and Bristol University</b>
<b>13.20</b>	<b>Using the Guidance</b>	<b>Murray Dale, JBA</b>
<b>13.30</b>	<b>Questions and Discussion</b>	<b>Panel chaired by Suraje Dessai</b>
<b>13.55</b>	<b>Break</b>	
<b>14.00</b>	<b>Intro to work on surface water flooding within FUTURE-DRAINAGE</b>	<b>Prof Hayley Fowler, Newcastle University</b>
<b>14.05</b>	<b>Implications of new climate uplifts in fully-hydrodynamic urban flood models for 6 UK cities</b>	<b>Dr Xiaodong Ming, Loughborough University</b>
<b>14.15</b>	<b>Comparison to national RoFSW methodology</b>	<b>Murray Dale, JBA</b>
<b>14.25</b>	<b>Questions and discussion</b>	<b>Panel chaired by Hayley Fowler</b>
<b>15.00</b>	<b>End</b>	

Website: <https://www.ukclimateresilience.org/>



# How to engage



- Presentations first then Q&A and discussion
- Post questions in the Q&A box at any time
- Upvote your favourites
- Attendees will remain muted unless enabled to speak by the host
- Webinar (audio and slides) will be shared after the event
- Technical problems – chat
- The webinar is being recorded



## The impacts of climate change on rivers in the UK

As part of the UK Centre for Ecology & Hydrology's wider work on the impacts of climate change on river flows in the UK, an online questionnaire has been created to assess the level of interest in a range of possible related datasets, along with preferences for data formats and access. The survey should only take 5 minutes, and is completely anonymous.

UKCEH  
Survey



**\*The survey closes on 30 November\***



## Workshop

Wednesday 8  
December  
3:30-5:00pm.

GREATER  
LONDON  
AUTHORITY

**Bloomberg Associates**

### Greater London Authority Climate Risk Mapping

There are a few spaces left for the GLA's online workshop on climate risk mapping, which is aimed at helping partners and stakeholders consider social and climate vulnerability as part of new and existing projects, programmes, and strategies.

If you'd like to find out more about the mapping and how it can be applied in your work area, you're welcome to join.

Please email [Kristen.Guida@london.gov.uk](mailto:Kristen.Guida@london.gov.uk) if you would like to attend.

<https://data.london.gov.uk/dataset/climate-risk-mapping>

# New Publication



## New paper from the Met Office and UKCRP\_SPF

A new paper has been published from the project Improving Climate Hazard Information:

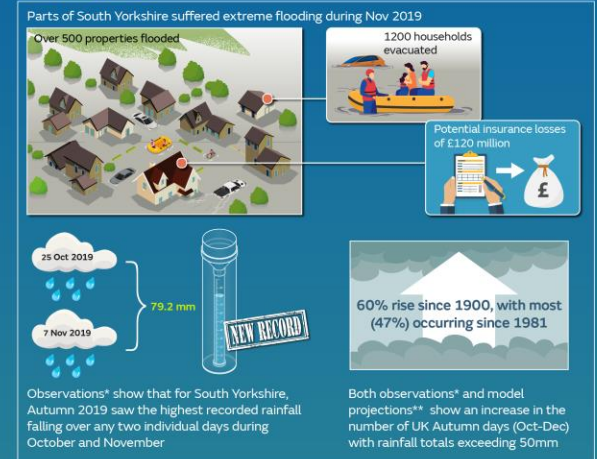
Increase in the frequency of extreme daily precipitation in the United Kingdom in autumn

By Daniel Cotterill, Peter Stott, Nikolaos Christidis and Elizabeth Kendon.

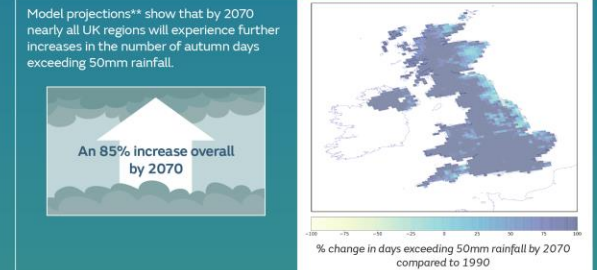
Published in Weather and Climate Extremes  
Volume 33, September 2021,  
100340



### Increase in frequency of extremely wet autumn days in the UK Current Hazard



### Future Hazard



### Future Risk and Resilience



Cotterill et al. 2021. Increase in the frequency of extreme daily precipitation in the United Kingdom in autumn, Weather and Climate Extremes  
\*\*HadUK-Grid \*\*UK Climate Projections 12 km RCM / RCP 8.5  
Prepared by the Met Office and the UK Research and Innovation (UKRI) on behalf of the UKCRP. © Crown Copyright 2021. Met Office 2021

# FUTURE-DRAINAGE

Professor Hayley Fowler (Newcastle University), Lizzie Kendon (UK Met Office), Murray Dale (JBA) and Xiaodong Ming (Loughborough University)



UK Research  
and Innovation



# Next webinars:



**Wednesday, 1<sup>st</sup> December , 2021 12.00-13.00**

**Speakers:** Professor Martin Evans, University of Manchester and Tim Thom, Yorkshire Peat Partnership

**Title:** Understanding the microbial communities of resilient peatlands



**Wednesday, 12th January, 2022 12.00-13.00 tbc**

**Speakers:** Dapeng Yu, Loughborough University

**Title:** Unlocking the potential of surface water flood nowcasting for emergency services in a changing climate



*Register on our website:*

<https://www.ukclimateresilience.org/news-events/climate-resilience-webinar-series-2020-2021/>



UK Research  
and Innovation





# Contact details

**Website:** [www.ukclimateresilience.org](http://www.ukclimateresilience.org)

**Twitter:** @UKCRP\_SPF

**YouTube:** UK Climate Resilience programme



The UK Climate Resilience programme is supported by the UKRI Strategic Priorities Fund.  
The programme is co-delivered by the Met Office and NERC on behalf of UKRI partners AHRC, EPSRC, ESRC.