

Overview of the UK Climate Resilience Programme

Suraje Dessai & Kate Lonsdale, SPF UK Climate Resilience Champions, University of Leeds & Jason Lowe, Met Office

8th March 2023



UK Research
and Innovation



UNIVERSITY OF LEEDS



**February
2019 to
March 2023**

£19m

Themes

Climate risks

Characterising and quantifying climate-related risks to the UK

Climate adaptation

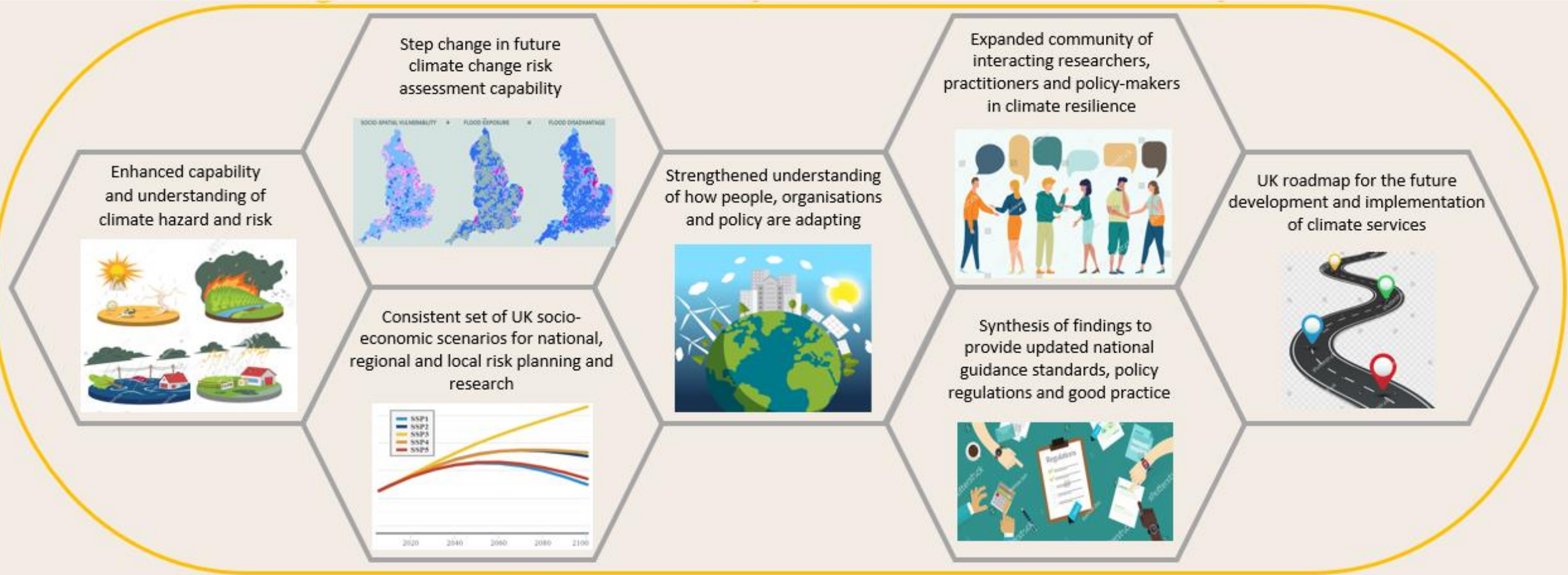
Managing climate-related risks through adaptation

Climate services

Working with partners to turn climate information and knowledge into action usable services

Cross-cutting

UK Climate Resilience Programme - A Lasting Legacy



Expanded community of researchers, practitioners and policy makers



- Newsletters, blogs, website, events, virtual fora, COP26, ongoing interactions with CCC and government



Producing a consistent set of socio-economic scenarios



Downscaled SSPs for the UK that is consistent with the global SSPs that underpin the sixth IPCC Assessment Report



Five different storylines to explain how the economy and society might evolve over the next 80 years

Strengthened understanding of how people, organisations and policy are adapting

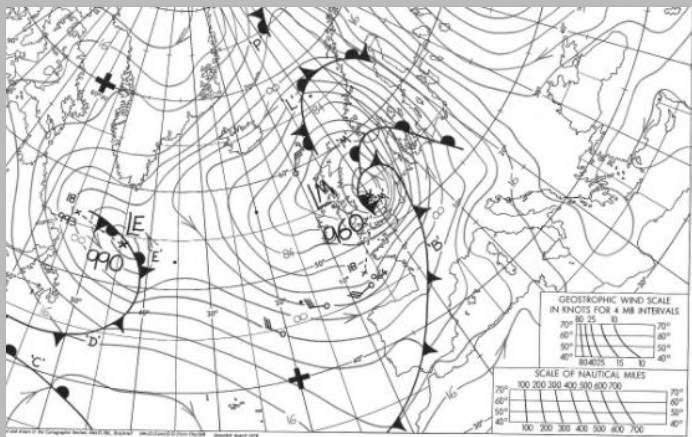


Mobilising Adaptation: Governance of Infrastructure through Co-Production (MAGIC) Developing a community-led approach to reducing flood risk, whilst providing opportunities for flood-vulnerable urban residents to improve health and wellbeing, through better engagement with blue and green spaces.



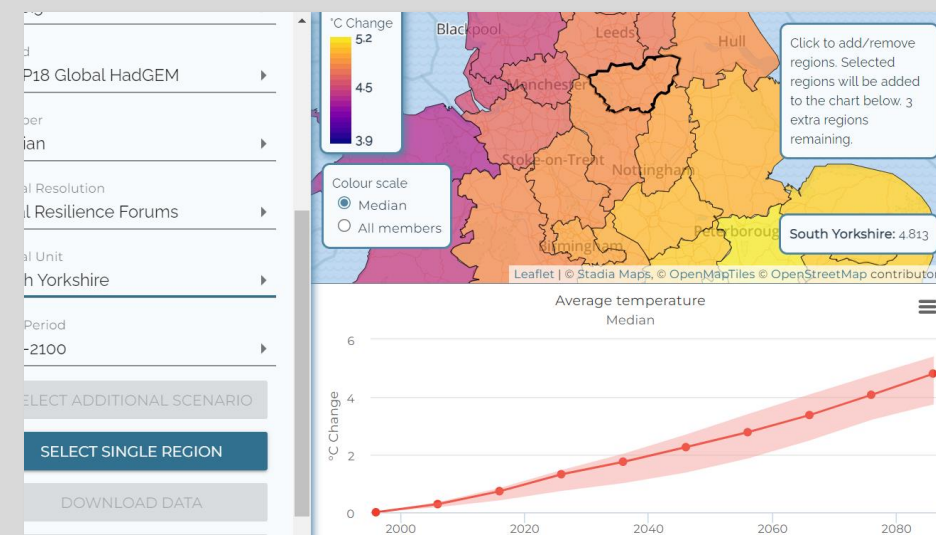
Climacare: governing the climate adaptation of care settings
Understanding the human behaviour, organisational capacity and governance to enable the UK's care provision to develop adaptation pathways to rising heat stress under climate change.

An enhanced capability and understanding of climate hazard and risk



STORMY-WEATHER. This is using the latest climate projections from CMIP6 and UKCP18 to develop a new methodology to understand what drives changes in extreme rainfall and windstorms for different storm types. This is producing a set of physically plausible, high impact storm hazard storylines.

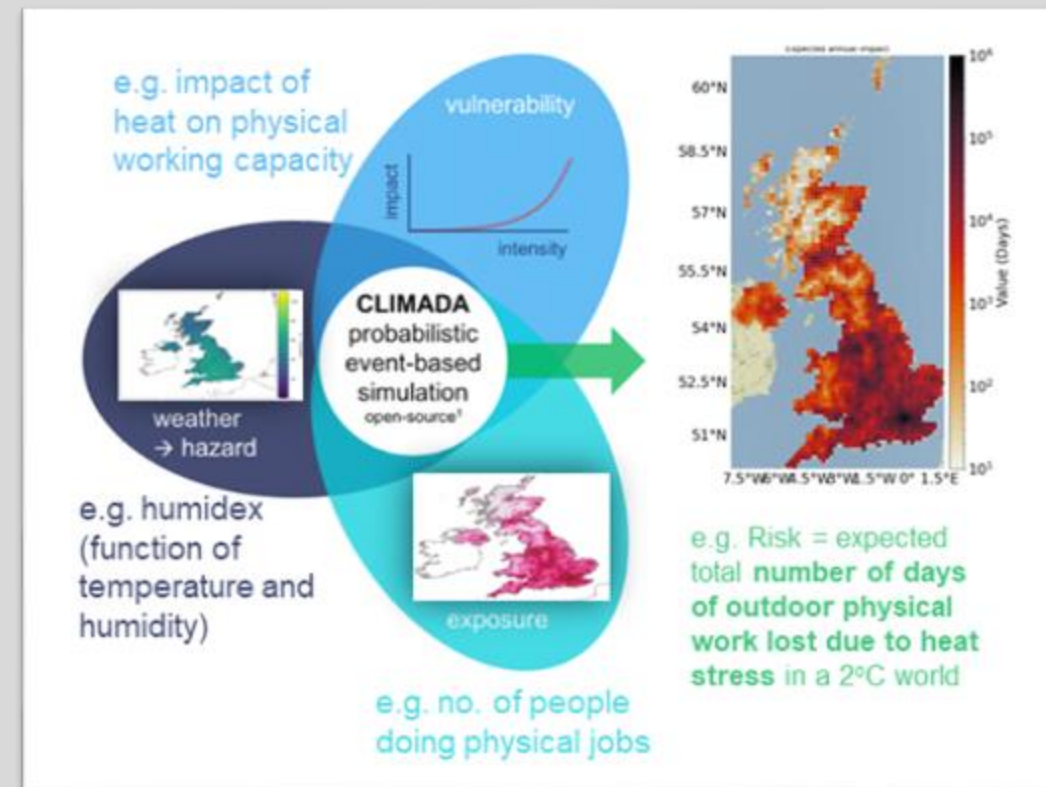
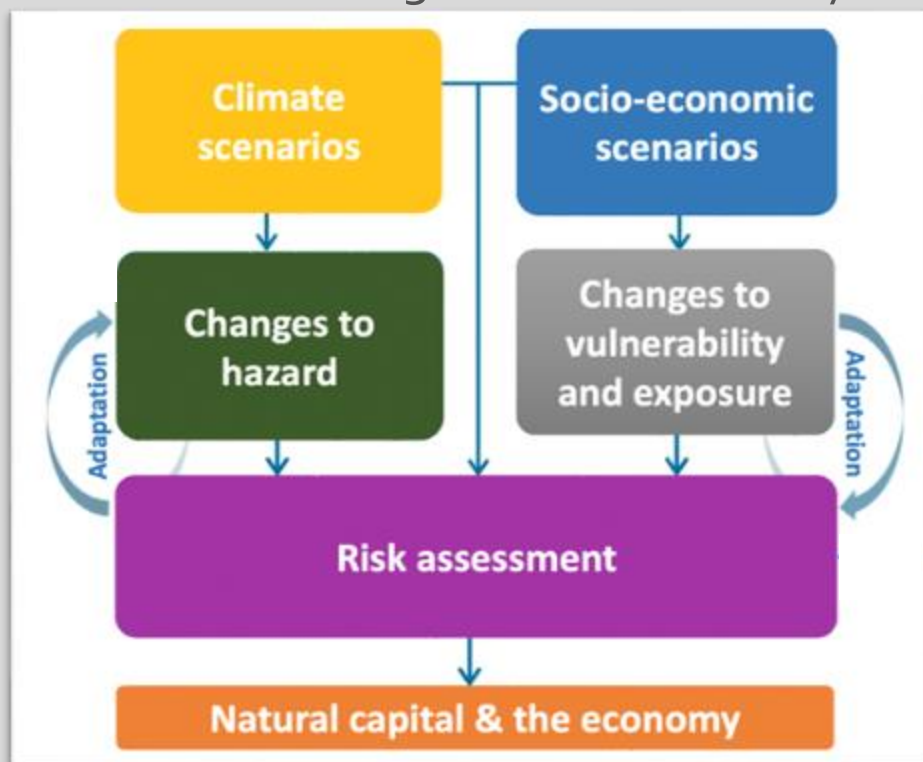
Climate risk indicators: developed user relevant indicators of climate risk using UKCP18 to support risk assessments. The initial dataset includes metrics from sectors that include energy, transport, agriculture and health. Later work produced a web based delivery system for the results



A step change in UK climate change risk assessment capability



Open Climate Impacts Modelling Framework (OpenCLIM): an advanced open modelling framework and nurturing a community of developers and users to ensure long term sustainability.





Applying catastrophe modelling approaches to climate risk assessment: Use of open source risk tools adapted for use with climate model data and event set sampling

UK roadmap and tools for the future development and implementation of climate services



A standard for climate services



Climate Services:
Principles, requirements, and guidelines

Pledge for the UKCR Climate Services Standard

This form is to allow organisation/department(s) to formally acknowledge that they are either willing to sign-up to follow the Climate Services Standard developed under the UKCR Programme, supportive of the Standard or considering following or supporting it in the future.

The form can also be completed if you have any questions or would like to find out more about the Climate Services Standard. There are several optional questions included in the survey and we would be very grateful if you do provide responses to these.

* Required

1. Name *

Enter your answer

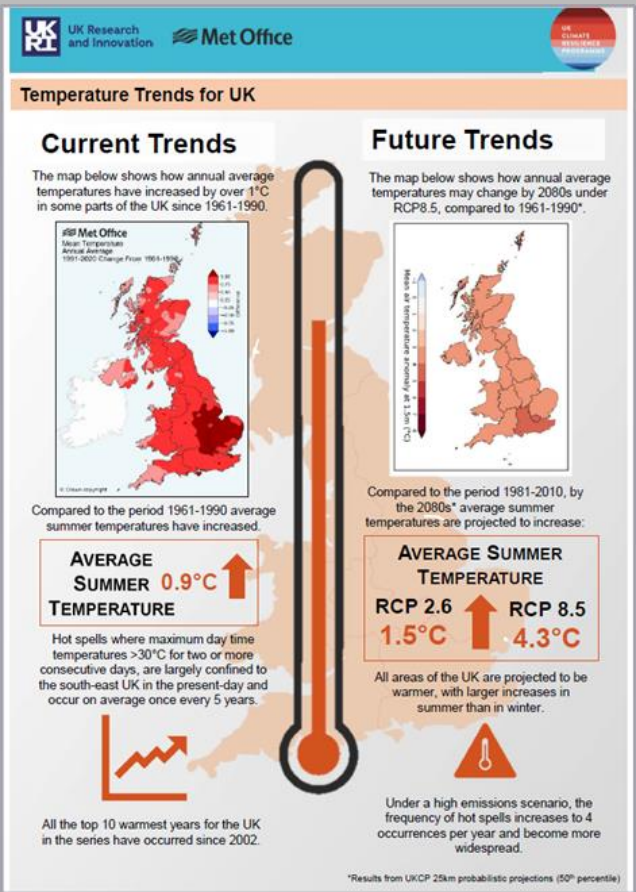
2. Organization and department(s) *

Enter your answer

82 participants
from 64
organisations
across the UK



Towards a UK National Framework for Climate services



Climate service pilots